

■ Note: When specifying/ordering grates, refer to "Choosing the Proper Inlet Grate" on pages 125-126.
 For a complete listing of FREE OPEN AREAS and WEIR PERIMETERS of all NEENAH grates, refer to pages 327-332.

R-2556 Inlet Frame, Grate

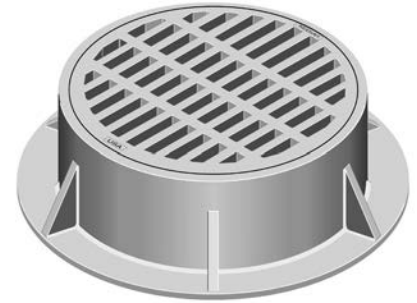
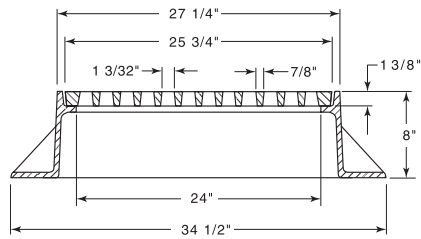
Heavy Duty

CATALOG NUMBER	GRATE TYPE	SQ. FT. OPEN	WEIR PERIMETER LINEAL FEET
R-2556	G	1.5	6.7
R-2556	F	1.4	6.7

Standard Grate (shown): Type G
 Alternate Grate(s):



Available Lid: R-1556

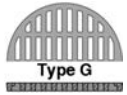


R-2556-A Inlet Frame, Concave Grate

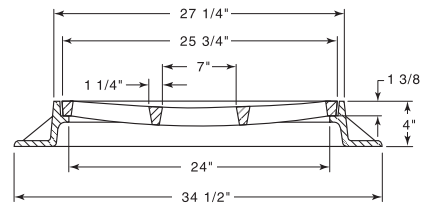
Heavy Duty

CATALOG NUMBER	GRATE TYPE	SQ. FT. OPEN	WEIR PERIMETER LINEAL FEET
R-2556-A	F	1.4	6.7
R-2556-A	G	1.5	6.7

Standard Grate (shown): Type F
 Alternate Grate(s):



Available Lid: R-1556

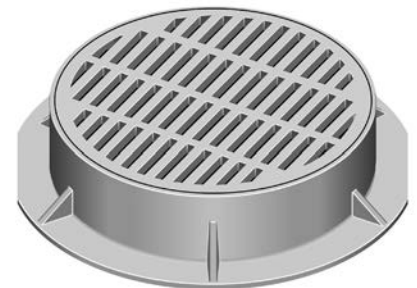
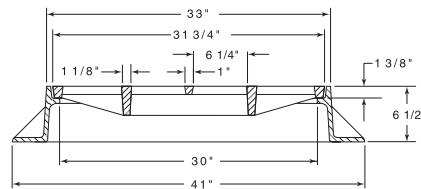


R-2557 Inlet Frame, Grate

Heavy Duty

CATALOG NUMBER	GRATE TYPE	SQ. FT. OPEN	WEIR PERIMETER LINEAL FEET
R-2557	G	2.0	8.4

Available Lid: R-1557

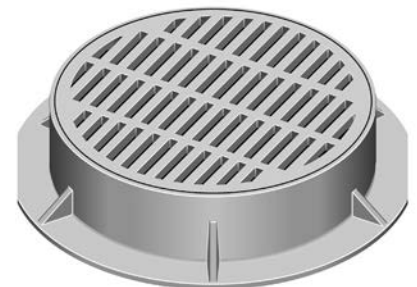
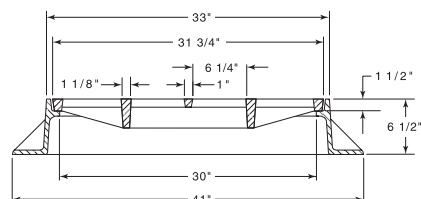


R-2557-A Inlet Frame, Grate

Heavy Duty

CATALOG NUMBER	GRATE TYPE	SQ. FT. OPEN	WEIR PERIMETER LINEAL FEET
R-2557-A	G	2.0	8.4

Available Lid: R-1557-A



Supplied By:

**TRENCHDRAIN
SUPPLY**

877-903-7246

www.trenchdrainsupply.com

CLICK HERE to return to the Table of Contents