



ZF806

TRENCH DRAIN SUPPLY

877-903-7246

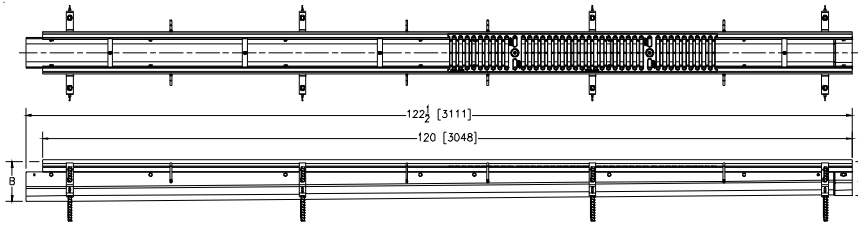
www.trenchdrainsupply.com

SPECIFICATION SHEET

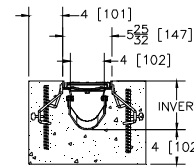
6 [159] WIDE REVEAL FIBER REINFORCED POLYMER TRENCH DRAIN SYSTEM

TAG _____

Dimensional Data (inches and [mm]) are Subject to Manufacturing Tolerances and Change Without Notice



NOTE: +Actual Channel length is 122 3/4 [3112] to allow overlap.



SPECIFYING ENGINEER IS RESPONSIBLE FOR CONCRETE ENCASING AND REINFORCING BASED UPON APPLICATION AND LOCAL CODES.

ENGINEERING SPECIFICATION: Zurn ZF806

Channels shall be 120 [3048] long, 6 [152] wide and have a 4 [102] throat. Modular channel section shall be made of Fiber Reinforced Polymer (FRP). Shall have a positive mechanical connection between channel sections that will not separate during the installation. Channels shall weigh less than 2.31 lbs. [1.05kg] per linear foot, have a smooth, 1-1/2 [38] radiused self cleaning bottom with a Manning's coefficient of .009 and .75% or neutral 0% built in slope. Shall be provided with standard DGC grates that lock down to frame. Zurn 6 [152] wide reveal Ductile Iron Slotted Grate conforming to ASTM specification A536, Grade 80-55-06. Ductile Iron grate is rated class C per the DIN EN1433 top load classifications. Supplied in 20 [508] nominal lengths with 1/2 [13] wide slots, and 3/4 [19] bearing depth. Grate has an open area of 28.1 sq. in per ft. [59,463 sq. mm per meter]. The #10 gage thick Heavy-Duty Carbon Steel Frame Assembly conforms to ASTM specification A36. Frames shall mechanically lock into the concrete surround at a maximum spacing of every 20 [508] with 16 concrete anchors per 120 [3048]. Frames shall have rebar attachment brackets as standard to secure trench in its final location. Grate lockdown bars are to be integral to the frame. The frame is supplied with a powder coated finish. All welds must be performed by a certified welder per ASTM standard AWS D1.1. Frames and Channels shall be produced in the U.S.A.

Table with columns: Trench No., 'A' Shallow Inv., 'B' Deep Inv., and Flow (cfs, gpm, lps). Rows 1002 to 1010.

Note:

The maximum fluid temperature through the system must not exceed 150°F [66°C] and the range (Max. Temp. to Min. Temp.) must not exceed 100°F [38°C].

PREFIX OPTIONS (Check/specify appropriate options)

___ ZF Ten-foot Fiber Reinforced Polymer (FRP)*

SUFFIX OPTIONS (Check/specify appropriate options)

Outlet Adapters Add/Each

- E1 Closed End Cap
-E2 2 [51] No-Hub End Outlet
-E3 3 [76] No-Hub End Outlet
-E4 4 [102] No-Hub End Outlet
-E6 6 [152] No-Hub End Outlet
-U2 2 [51] No-Hub Bottom Outlet
-U3 3 [76] No-Hub Bottom Outlet
-U4 4 [102] No-Hub Bottom Outlet
-U6 6 [152] No-Hub Bottom Outlet

Grate Options (Load Classifications are per DIN EN1433)

- BDC Black Acid Resistant Epoxy Coated Ductile Grate - Class C
-BDE Black Acid Resistant Epoxy Coated Ductile Grate - Class E
-BG Galvanized Ductile Iron Cast Bar Grate - Class C
-DC Ductile Iron Solid Cover - Class C
-DBG Ductile Iron Cast Bar Grate - Class C
-DGC Ductile Iron Slotted Grate - Class C *
-DGE Ductile Iron Slotted Grate - Class E
-GDC Galvanized Ductile Slotted Grate - Class C
-GDE Galvanized Ductile Slotted Grate - Class E
-GHPD Galvanized Heel-Proof Ductile Grate - Class B
-GHPDE Galvanized Heel-Proof Ductile Grate - Class E
-GG Fiberglass Grate - Class A
-HPD Heel-Proof Ductile Slotted Grate - Class B
-HPDE Heel-Proof Ductile Slotted Grate - Class E
-HPP Heel-Proof Polyethylene Grate - Class A
-LD Ductile Iron Longitudinal Slotted Grate - Class B
-RFGC Reinforced Slotted Galvanized Grate - Class C
-RFSC Reinforced Slotted Stainless Steel Grate - Class C
-RPGC Reinforced Perforated Galvanized Grate - Class C
-RPGR Reinforced Galvanized Perforated Reverse Punch Anti-Slip Grate - Class B
-RPGRC Reinforced Perforated Galvanized Reverse Punch Grate - Class C
-RPSC Reinforced Perforated Stainless Steel Grate - Class C
-RPSRC Reinforced Perforated Stainless Steel Reverse Punch Grate - Class C

Miscellaneous Options

- DB Bottom Dome Strainer
-JC Joint Connector
-VP Vandal-Proof Lockdown

Decorative Grate Options (Load Classifications are per DIN EN1433)

- BCD Bronze Circular Decorative Grate - Class A
-BDD Bronze Diagonal Decorative Grate - Class A
-DCD Ductile Iron Circular Decorative Grate - Class C
-DDD Ductile Iron Diagonal Decorative Grate - Class A
-DOG Ductile Iron Decorative Grate - Class A
-DWV Ductile Wave Decorative Grate - Class A
-DTW Ductile Iron Tidal Wave Grate - Class C
-HPB Heel-Proof Bronze Slotted Grate - Class A
-HPS Heel-Proof Stainless Steel Slotted Grate - Class A
-SBG Stainless Steel Bar Grate - Class E
-SCD Stainless Steel Circular Decorative Grate - Class B
-SDD Stainless Steel Diagonal Decorative Grate - Class B
-SMG Stainless Steel Mesh Grate - Class B
-SOG Stainless Steel Decorative Grate - Class B

MADE in the U.S.A. (Load Classifications are per DIN EN1433)

- AWG Aluminum Wire Grate - Class A
-BDE-USA Black Acid Resistant Epoxy Coated Ductile Grate - Class E
-DCE-USA Ductile Solid Cover - Class E
-DGC-USA Ductile Iron Slotted Grate - Class C
-DGE-USA Ductile Iron Slotted Grate - Class E
-FG Fabricated Galvanized Steel Slotted Grate - Class A
-FS Fabricated Stainless Steel Slotted Grate - Class A
-GDC-USA Galvanized Ductile Slotted Grate - Class C
-GDE-USA Galvanized Ductile Slotted Grate - Class E
-GHPDE-USA Galvanized Heel-Proof Ductile Grate - Class E
-GMG Galvanized Steel Mesh Grate - Class B
-HPDE-USA Heel-Proof Ductile Slotted Grate - Class E
-PG Perforated Galvanized Steel Grate - Class A
-PGR Galvanized Perforated Reverse Punch Anti-Slip ADA Grate - Class A
-PS Perforated Stainless Steel Grate - Class A
-PPC Plastic Perforated Grate - Class C

Decorative MADE in the U.S.A. (Load Classifications are per DIN EN1433)

- BZ Bronze Decorative Grate - Class A
-NBZ Nickel Bronze Decorative Grate - Class A
-PDE-USA Ductile Iron Perforated ADA Grate - Class E
-PSR Perforated Stainless Steel Raised Grate - Class A
-SWG Stainless Steel Wire Grate - Class A

* Regularly furnished unless otherwise specified.

Zurn Industries, LLC | Specification Drainage Operation

1801 Pittsburgh Avenue, Erie, PA U.S.A. 16502 · Ph. 855-663-9876, Fax 814-454-7929

In Canada | Zurn Industries Limited

3544 Nashua Drive, Mississauga, Ontario L4V 1L2 · Ph. 905-405-8272, Fax 905-405-1292

www.zurn.com

Rev. F

Date: 07/23/14

C.N. No. 131256

Prod. | Dwg. No. ZF806