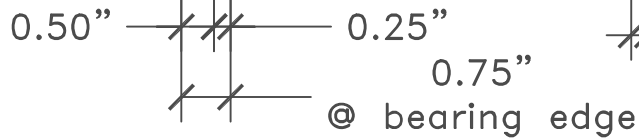
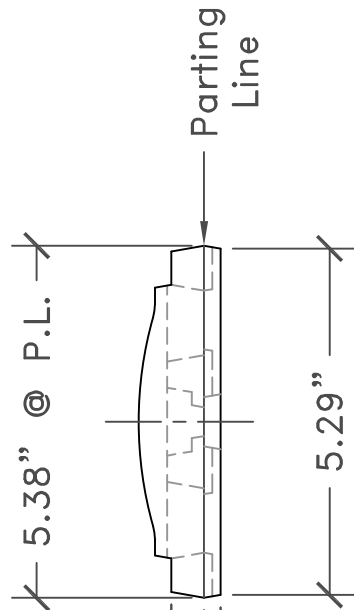
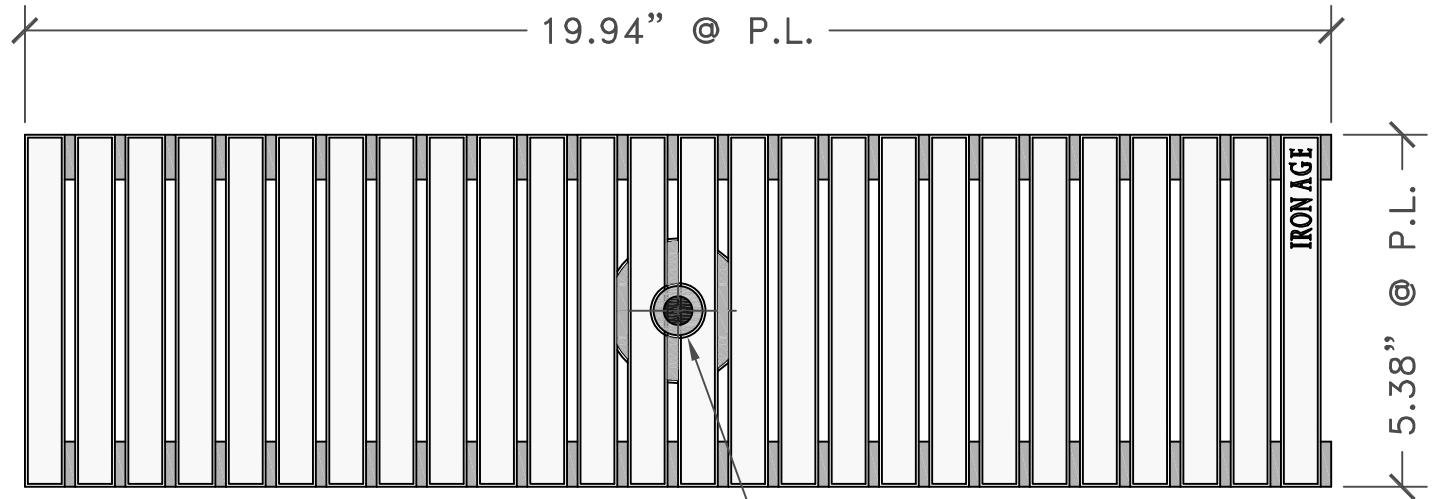


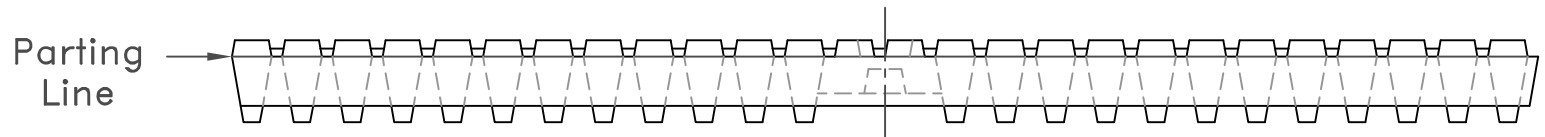
END



TOP



hole for bolt down,  
surrounding slots are  
expressed, but not through



ELEVATION

Supplied By:

**TRENCHDRAIN SUPPLY**  
877-903-7246  
www.trenchdrainsupply.com



**IRON AGE**  
DESIGNS

2104 SW 152nd St. #4 TEL 206.276.0925  
Burien, WA 98166 FAX 206.257.0318  
www.ironagedesigns.com

NOTES:

1. Material: cast iron
2. Natural finish
3. Total thickness: 1"
4. Fits drain channels manufactured by:  
Zurn® Z806, Z886
5. No openings greater than 1/4"
6. Due to casting inconsistencies, all dimensions are nominal.

Regular Joe 5.38"x20" Heel-Proof Trench Grate

drawing no. C-0710.R2.06

drawn by: CD  
scale: NTS  
date: 07/18/07

© 2007 Iron Age Designs