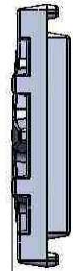


TOP VIEW
scale 1:2

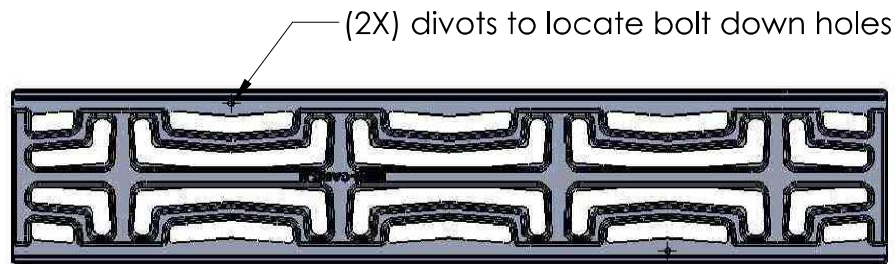
0.361" top thickness max.



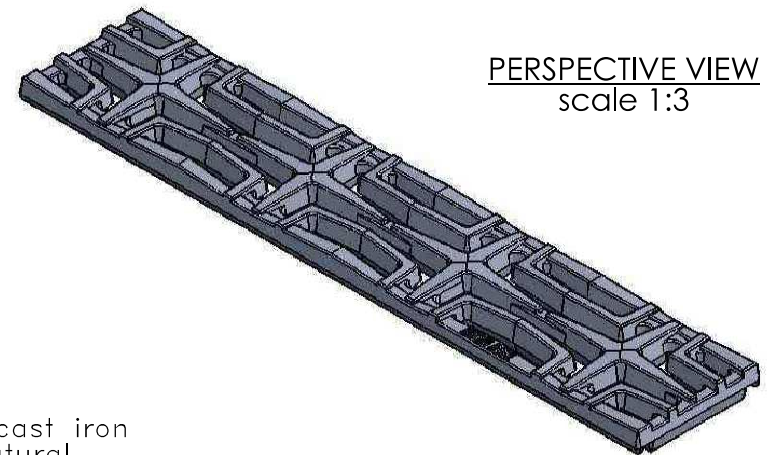
END VIEW
scale 1:2



FRONT VIEW
scale 1:2



BOTTOM VIEW
scale 1:3



PERSPECTIVE VIEW
scale 1:3



Supplied By:
**TRENCH DRAIN
SUPPLY**
877-903-7246
www.trenchdrainsupply.com

IRON AGE 2104 SW 152nd St. #4 TEL 206.276.0925
DESIGNS Burien, WA 98166 FAX 206.257.0318
www.ironagedrains.com

Carbochon 3"x14" Trench Grate

Drawn by: CD

Date: 04/5/08

DWG. NO. CAR.N.03x14

Scale: NTS

NOTES:

1. Material: cast iron
2. Finish: Natural
3. Edge Thickness: approx. 9/32"
4. Replaces drain manufactured by: NDS® Mini-Channel
5. No openings great than: 3/8"
6. Due to casting inconsistencies all dimensions are nominal